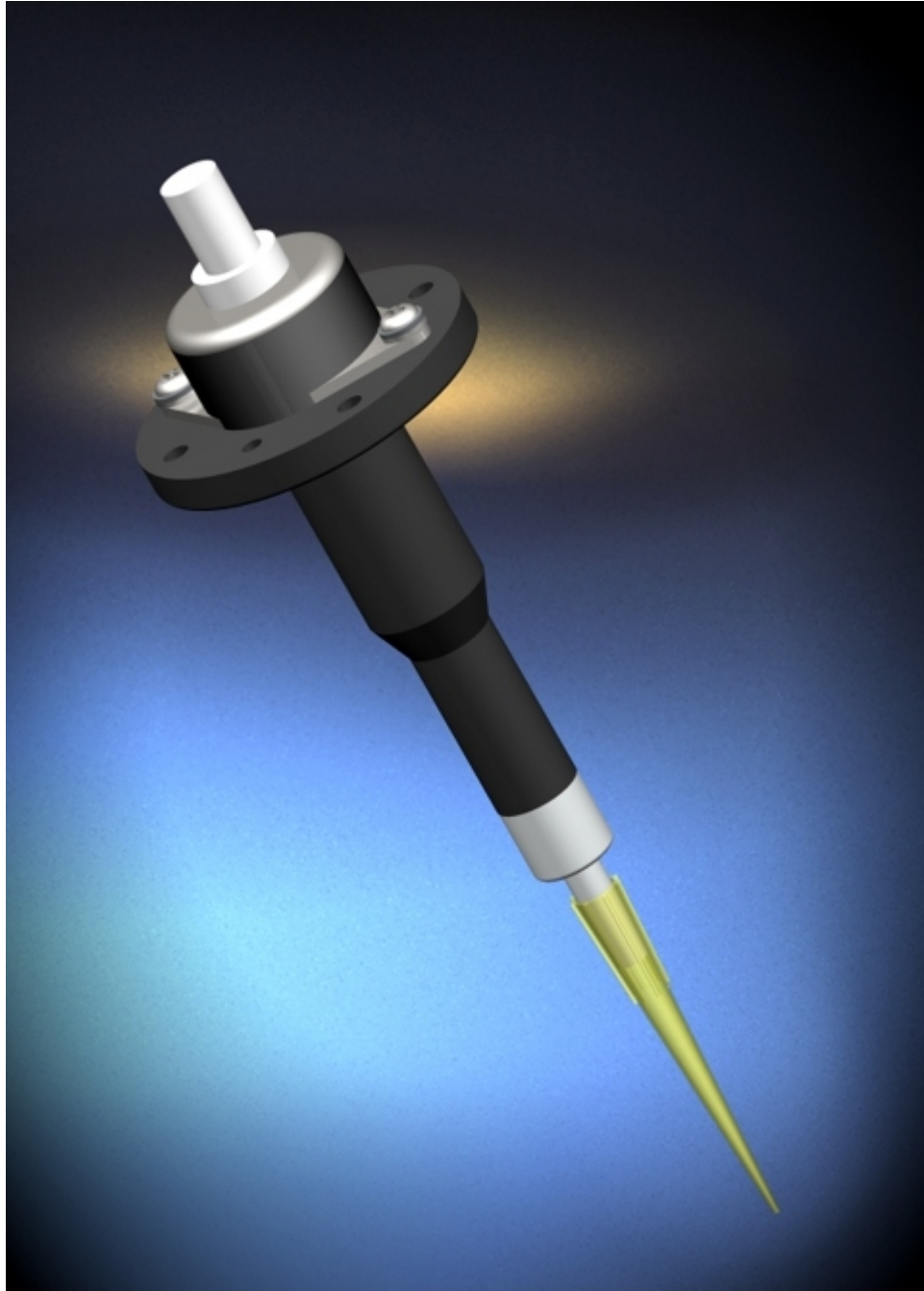


Z-Series Pump



TriContinent Z-Series Pumps are electronic air displacement pipetting modules designed for use on TriContinent MAP XYZ/robotic systems. The compact and lightweight unit simplifies system design by eliminating tubing and priming requirements normally associated with routine liquid handling tasks. Sample transfers or reagent aliquoting can be done accurately and precisely using disposable tips, eliminating cross contamination and carryover.

The range of volumes for aspiration and dispensing volumes from sub-microliter to 1000 μ L. Precision and Accuracy exceeds that of any similarly sized handheld pipette. The simple mechanical interface makes it easy to integrate with other XYZ systems, as well. Developers can use their own drivers or they can be matched with the M-Series motion controllers to provide a complete package.

Custom volumes and mounting configurations are also available on an OEM basis. Please contact your TriContinent representative with your requirements.

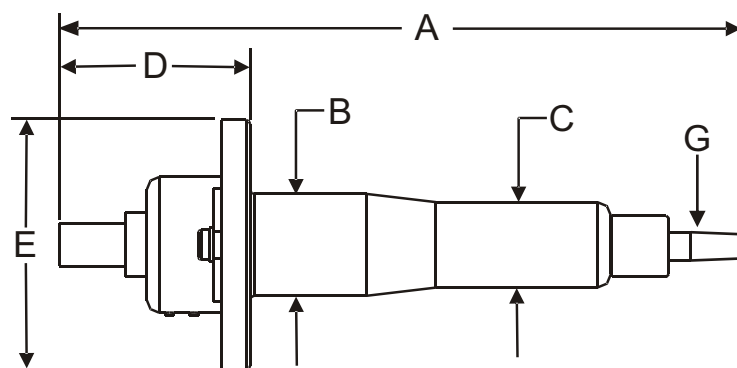
Volume Displacement (nominal)	200 μ L Cat# 842	1000 μ L Cat# 843	2000 μ L Cat# 844	5000 μ L Cat# 845
Step Resolution	.381 μ L/full step .191 μ L/half step	1.527 μ L/full step .763 μ L/half step	3.808 μ L/full step 1.904 μ L/half step	7.616 μ L/full step 3.808 μ L/half step
Dimensions				
A. Overall Length	4.78" (121.41mm)	5.14" (130.56mm)	5.33" (135.38mm)	5.43" (137.92mm)
B. Major Body Diameter	.66" (16.76mm)	.75" (19.05mm)	.95" (24.13mm)	1.07" (27.18mm)
C. Minor Body Diameter	.46" (11.68mm)	.63" (16.00mm)	.85" (21.59mm)	N/A
Weight	2.28oz (64.6g)	2.79oz (79g)	2.93oz (83.1g)	3.68 oz (104.2g)
Syringe Data				
Bore	.1721" (4.37mm)	.3441" (8.74mm)	.5441" (13.82mm)	.7694" (19.54mm)
Stroke	.709" (18.00mm)	.709" (18.00mm)	.709" (18.00mm)	.709" (18.00mm)
Tip	TCS Cat# 10000	TCS Cat# 10001	TCS Cat# 10002	TCS Cat# 10003

Below data applies to all volumes

- D. Motor Height 1.42" (36.07mm)
- E. Flange Diameter 1.84" (46.73mm)
- F. Tip Adapter Interface ¼ - 28 UNF, male thread with 009 Viton® o-ring

- G. Tip Adapter For use with TriContinent Tips

- Motor/Leadscrew Data
- Travel/step .001" (0.0254mm) full step
.0005" (0.0127mm) half step
 - Resistance/phase 14.7 Ω
 - Inductance/phase 8.5mH
 - Rated current .34 A
 - Rated voltage 5.0 V*



* Pump should typically be driven with a 24 vdc bipolar chopper drive, ½ step, at rated current. Higher voltage may be required at higher step rates.



12555 Loma Rica Drive Grass Valley, California 95945

Tel: (800) We-Pipet or (530) 273-8888 Fax: (530) 273-2586

Email: liquidhandling@tricontinent.com Web: www.tricontinent.com