

La Nouvelle Etoile

CRUISING IN HOLLAND DURING SPRING

The Barge Connection
2036 Nevada City Highway #311
Grass Valley, CA 95945
Phone 888.550.8580
Phone 530.274.0764
Fax 530.274.0825
www.bargeconnection.com
Email info@bargeconnection.com

08/28/08



T H E B A R G E

C O N N E C T I O N

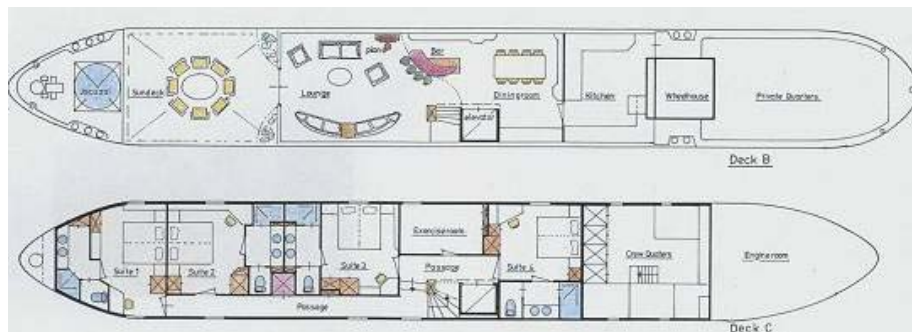
TECHNICAL SPECIFICATIONS

La Nouvelle Etoile

SPECIFICATIONS

Size:	128" X 17"
Capacity:	8
Crew:	5
Cabins:	4
Accommodations:	4 Large Suites (Queen or Twin)
Heat & Air:	Central Heating & Air Conditioning
Cruising Region:	Holland during Spring
Length of Cruise:	6 Nights
Departure Day:	Sunday
Electricity:	The voltage aboard is 220 volt A/C and 110v (for electric shavers)
Hairdryers:	Provided
Meals:	All Included
Beverages:	All Included
Entrance Fees:	All Included
Laundry Facilities:	Small loads acceptable
Transportation:	Transfers to and from Paris & Private Motorcoach for excursions
Pick-Up Location:	Paris Hotel or Rail Station
Pick-Up Time:	3:30 PM
Recreational Items:	Soundsystem with CD, Jacuzzi, 6 Bikes, Fully Stocked Bar, Library, Exercise Room, TV and Computer in each cabin
Theme Cruises:	Golfing, Biking, Three Country, Mosel River Cruise

BOAT DIAGRAM



08/28/08

Phone: 888.550.8580
Phone: 530.274.0764



Email: info@bargeconnection.com
Website: www.bargeconnection.com

T H E B A R G E

C O N N E C T I O N

SAMPLE ITINERARY

La Nouvelle Etoile

WEESP TO OUDERKERK

Sunday

You are met at the hotel and driven to the Etoile, moored in the quaint little village of Weesp for a champagne welcome and evening cruise to Muiden.

Monday

Morning visit to the magnificent castle of Muiden. Our cruise takes us along the beautiful Vecht River, an area noted for its castles and country estates. During the 17th and 18th centuries the wealthy merchants of Amsterdam built their mansions here and laid out charming formal gardens. Moor for the night in the old town of Maarsen.

Tuesday

Early morning cruise along the Hollandse IJssel. Stop along the way to visit the Witches Scale in Ouderwater and then on to the cheese town of Gouda. Besides cheese, you will find beautiful buildings, excellent shops and the most magnificent stained glass windows in Holland.

Wednesday

This morning, for those who are interested, visit the farm of a local cheesemaker whose operation has been run by the same family for several generations. Cruise to Rotterdam, through the center of this busy port and on to Delft. Visit the Delft Pottery Works, where porcelain is still handmade and painted. Spend the rest of the afternoon wandering around this delightful ancient Dutch city.

Thursday

A morning cruise through the canals past Leiden, across the magnificent Kaag Lakes to Lisse. Spend the afternoon at the famous Keukenhof Gardens with the largest display of flowers in the world. Here you will see hundreds of varieties of tulips, hyacinths and other bulbs. Visit the Cruquis Museum near Haarlem, then enjoy a leisurely cruise into nearby Haarlem.

Friday

An early rise and drive to the colorful flower auction in Aalsmeer. After breakfast, visit the picturesque town of Haarlem and the museum of the famous Dutch painter, Frans Hals. Cruise to the village of Zaanse Schans where you can tour a working windmill. Evening

08/28/08

Phone: 888.550.8580
Phone: 530.274.0764



Email: info@bargeconnection.com
Website: www.bargeconnection.com

T H E B A R G E

C O N N E C T I O N

SAMPLE ITINERARY

La Nouvelle Etoile

WEESP TO OUDERKERK

you back to a previous century and then on to Ouderkerk to moor for the night. Farewell dinner on board.

Saturday

After breakfast you are driven to your hotel or the airport.

08/28/08

Phone: 888.550.8580
Phone: 530.274.0764



Email: info@bargeconnection.com
Website: www.bargeconnection.com

T H E B A R G E

C O N N E C T I O N

SAMPLE ITINERARY

La Nouvelle Etoile

WEESP TO OUDERKERK THREE COUNTRY CRUISE
HOLLAND, BELGIUM & PARIS

Day 1

Guests are met at their hotel in Amsterdam at 1:30 P.M. and driven to the Etoile for a champagne welcome and a cruise through the heart of the city to the quaint little town of Ouderkerk.

Day 2

Morning cruise along the canals to the town of Gouda, famous for its cheese. Afternoon visit to the Keukenhof Gardens, the largest display of flowers in the world. Here you will see hundreds of varieties of tulips, hyacinths and other bulbs. After we return to the Etoile there will be time for a stroll around Gouda where we will find the most magnificent stained glass windows in Holland.

Day 3

A cruise out of Gouda to the river Ijssel and across the Holland Diep, part of the Dutch estuaries, to the charming old fortress town of Wilemstad. This town is preserved in its original state, with windmill dykes, an old church and a 15th

century arsenal. There will be an optional visit to the famous Delta Project which is one of the greatest feats of water engineering in the world involving damming the great estuaries.

Day 4

Today we will leave Holland and cross the border into Belgium and travel to Antwerp. Antwerp is the city of Rubens, where we can take a tour of Rubens' house, then a walk in the old quarter of this beautiful Flemish city.

Day 5

We catch the flood tide up the winding "Sea Schelde" which takes us to the town of Ghent. You will have plenty of time to visit this beautiful town in the afternoon.

Day 6

You cannot pass through this part of the world without a visit to the beautiful little town of Bruges, known as the "Venice of the North". The chef will pack a picnic lunch, so there will be plenty of time to explore the many museums, buy some of the handmade lace or take a boat trip in the small canals that wander through the town. Rejoin the Etoile in late after-

08/28/08

Phone: 888.550.8580
Phone: 530.274.0764



Email: info@bargeconnection.com
Website: www.bargeconnection.com

T H E B A R G E

C O N N E C T I O N

SAMPLE ITINERARY

La Nouvelle Etoile

WEESP TO OUDERKERK THREE COUNTRY CRUISE
HOLLAND, BELGIUM & PARIS

along the river Schelde to the French/Belgian frontier.

Day 7

After clearing customs at the frontier, (a simple formality), the Etoile continues along the Schelde, through the town of Valenciennes to the junction of Canal du Nord at the little French village of Arleux. The cars will take guests to Valenciennes along the way.

Day 8

The Etoile begins her climb over the Vermandois Hills of Picardie through the many locks and several tunnels of the Canal du Nord. The scenery is splendid - rural France at her best, and a good tow path allows guests to walk between locks. After lunch, the cars take an excursion to Amiens to visit what must be one of the greatest of all the Gothic cathedrals with its powerful, towering columns.

Day 9

The cruise continues along the Canal du Nord as it drops down into the valley of the river Somme; a short trip on the Somme before climbing over another watershed and down to the valley of the river Oise to moor in the riverside town of Compiègne. There are many places to visit, including the train where the World War I Armistice was signed, as well as the Royal Palace.

Day 10

As the Etoile continues down the lovely Oise River, guests are taken on an afternoon excursion to the old Roman town of Senlis with its quaint narrow streets, ancient churches and interesting museums, rejoining the Etoile for an evening cruise to the river town of Pontoise.

Day 11

Loaded down with a picnic lunch, deck chairs and tables, the cars take guests on a day excursion to Giverny to visit the home and gardens of the Impressionist, Claude Monet. The gardens should be at their best at this time of the year, and we can visit the waterlily pond and the Japanese bridge that inspired so many of Monet's paintings. Moor for the night in Pontoise.

08/28/08

Phone: 888.550.8580
Phone: 530.274.0764



Email: info@bargeconnection.com
Website: www.bargeconnection.com

T H E B A R G E

C O N N E C T I O N

SAMPLE ITINERARY

La Nouvelle Etoile

WEESP TO OUDERKERK THREE COUNTRY CRUISE
HOLLAND, BELGIUM & PARIS

Day 12

Cruise to Bougival in the morning and visit Malmaison, the home of Napoleon, its many rooms lavishly furnished by Josephine. Guests rejoin the Etoile for an evening cruise into Paris. The last evening is spent moored in the heart of Paris, beside the Place de la Concorde.

Day 13

After breakfast guests are driven either to their Paris hotel or to the airport.

08/28/08

Phone: 888.550.8580
Phone: 530.274.0764



Email: info@bargeconnection.com
Website: www.bargeconnection.com

T H E B A R G E

C O N N E C T I O N

2009 CRUISE SCHEDULE

La Nouvelle Etoile

March 29-Apr 4	Early Season	Haarlem to Haarlem (Tulip Cruise)
April 5-11	Early Season	Haarlem to Haarlem (Tulip Cruise)
April 12-18		Haarlem to Haarlem (Tulip Cruise)
April 19-25		Haarlem to Haarlem (Tulip Cruise)
April 26-May 2		Haarlem to Haarlem (Tulip Cruise)
May 3-9		Haarlem to Haarlem (Tulip Cruise)
May 10-16		Amsterdam to Bruges
May 17-27		Bruges to Paris (2 Country Cruise)
May 31-June 6		Paris to Auxerre
June 7-13		Auxerre to Paris
June 14-20		Paris to Epernay
June 21-27		Epernay to Paris
June 28-July 4		Paris to Auxerre
July 5-11		Auxerre to Paris
July 12-18		Paris to Auxerre
July 19-25	Value Season	Auxerre to Paris
July 26- Aug 1	Value Season	Paris to Epernay
Aug 2-8	Value Season	Epernay to Paris
Aug 9-15	Value Season	Paris to Epernay
Aug 16-22	Re-Position Cruise (no cruises for this week)	
Aug 23-29		Nancy to Strasbourg
Aug 30-Sep 5		Strasbourg to Nancy
Sept 6-12		Nancy to Strasbourg
Sept 13-19		Strasbourg to Nancy
Sept 20-26		Remich to Koblenz

08/28/08

Phone: 888.550.8580
Phone: 530.274.0764



Email: info@bargeconnection.com
Website: www.bargeconnection.com

T H E B A R G E

C O N N E C T I O N

2009 CRUISE SCHEDULE

La Nouvelle Etoile

Sept 20-26		Remich to Koblenz
Sept 27-Oct 3		Koblenz to Remich
Oct 4-10		Remich to Koblenz
Oct 11-17		Koblenz to Remich
October 18-24	Value Season	Remich to Koblenz

08/28/08

Phone: 888.550.8580
Phone: 530.274.0764



Email: info@bargeconnection.com
Website: www.bargeconnection.com

T H E B A R G E

C O N N E C T I O N

2009 PRICES

La Nouvelle Etoile

6 Night Cruise

Sunday Departures

Per Person:

\$6,150 p/p Early Season

\$6,500 p/p Value Season

\$6,900 p/p Main Season

8 Pass Charter:

\$46,900 Early Season

\$48,900 Value Season

\$52,900 Main Season

12 day Bruges to Paris

\$11,500 p/p

\$88,500 8 Pass Charter

EARLY SEASON:

March 29 & April 5

VALUE SEASON:

July 19, 26, August 2, 9; Oct 18

MAIN SEASON:

All Remaining Dates

08/28/08

Phone: 888.550.8580
Phone: 530.274.0764



Email: info@bargeconnection.com
Website: www.bargeconnection.com

T H E B A R G E

C O N N E C T I O N

MENU TYPES

La Nouvelle Etoile

Breakfast

Continental breakfast with freshly baked pastries and breads, cereals, fruit, yogurt and eggs made to order.

Morning Tea

Freshly brewed tea and coffee served with homemade lamingtons (sponge cake covered in coconut, dripped in chocolate).

Lunch

Dou potato soup with cheese, croutons, salads, cold meats, variety of pate, cheeses of the day, fresh breads and pastries.

Afternoon Tea

Hors d'oeuvres

Cheese and corn fritters.

Dinner

Entree - Trio of vegetables timbale, consisting of cauliflower, carrot, zucchini, gruyere and cayenne pepper. Served on a sauce of roasted red peppers, tomato and garlic.

Main Course - North Atlantic Salmon fillets grilled and topped with a champagne and chive lemon beurre blanc.

Cheese course consisting of the best regional cheeses.

Desert - Light chocolate souffle glazed with icing and Cream Chantilly.

Coffee, aperitifs and chocolates served in the main salon.

08/28/08

Phone: 888.550.8580
Phone: 530.274.0764



Email: info@bargeconnection.com
Website: www.bargeconnection.com

T H E B A R G E

C O N N E C T I O N

MENU TYPES

La Nouvelle Etoile

Sample 2

Breakfast

Continental breakfast with freshly baked pastries and breads, cereals, fruit, yogurt and eggs made to order.

Morning Tea

Freshly brewed tea and coffee served with banana bread.

Lunch

French toast with Virginia leg ham, gouda cheese and tomatoes. Served with assorted pate, cold meats, salads and freshly baked breads.

Afternoon Tea

Hors d'oeuvres

Smoked trout pate on pumpernickel.

Dinner

Entree - Sautéed Scottish King Scallops served on a bed of zucchini and cabbage braise, topped with lime and chervil sauce with trio of caviar.

Main Course - Pork Macadamia - Oriental marinated pork fillets, flame grilled with roasted macadamia nuts served on a bed of angel hair pasta with seasonal vegetables in a curry and sesame sauce.

Cheese course consisting of the best regional cheeses.

Desert - Bombe Alaska - a wild berry mousse encased in a vanilla sponge cake topped with meringue and then baked.

08/28/08

Phone: 888.550.8580
Phone: 530.274.0764



Email: info@bargeconnection.com
Website: www.bargeconnection.com

T H E B A R G E

C O N N E C T I O N