

# La Nouvelle Etoile

CRUISING THE CHAMPAGNE REGION OF FRANCE

The Barge Connection

2036 Nevada City Highway #311

Grass Valley, CA 95945

Phone 888.550.8580

Phone 530.274.0764

Fax 530.274.0825

[www.bargeconnection.com](http://www.bargeconnection.com)

Email [info@bargeconnection.com](mailto:info@bargeconnection.com)

08/28/08



T H E   B A R G E

C O N N E C T I O N

## TECHNICAL SPECIFICATIONS

# La Nouvelle Etoile

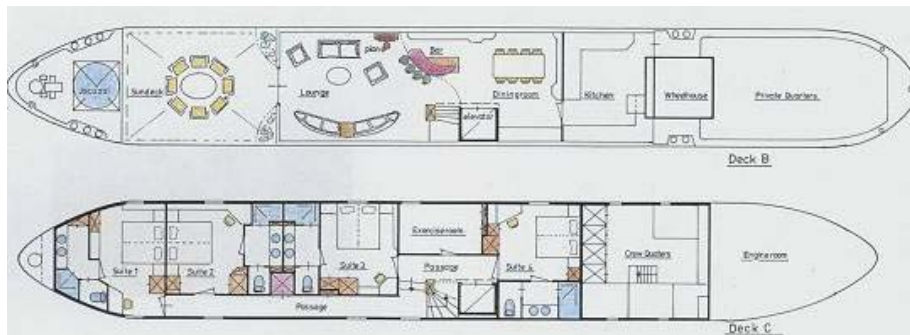
### SPECIFICATIONS

---

Size:	128" X 17"
Capacity:	8
Crew:	5
Cabins:	4
Accommodations:	4 Large Suites (Queen or Twin)
Heat & Air:	Central Heating & Air Conditioning
Cruising Region:	Champagne (Paris to Epernay)
Length of Cruise:	6 Nights
Departure Day:	Sunday
Electricity:	The voltage aboard is 220 volt A/C and 110v (for electric shavers)
Hairdryers:	Provided
Meals:	All Included
Beverages:	All Included
Entrance Fees:	All Included
Laundry Facilities:	Small loads acceptable
Transportation:	Transfers to and from Paris & Private Motorcoach for excursions
Pick-Up Location:	Paris Hotel or Rail Station
Pick-Up Time:	3:30 PM
Recreational Items:	Soundsystem with CD, Jacuzzi, 6 Bikes, Fully Stocked Bar, Library, Exercise Room, TV and Computer in each cabin
Theme Cruises:	Golfing, Biking, Three Country, Mosel River Cruise

### BOAT DIAGRAM

---



08/28/08

Phone: 888.550.8580  
Phone: 530.274.0764



Email: [info@bargeconnection.com](mailto:info@bargeconnection.com)  
Website: [www.bargeconnection.com](http://www.bargeconnection.com)

T H E B A R G E

C O N N E C T I O N

## SAMPLE ITINERARY

# La Nouvelle Etoile

CHAMPAGNE REGION

PARIS TO EPERNAY

A glorious week of cheese and wine tasting while cruising on the Marne, one of the most beautiful rivers in France.

### **Sunday**

You are met at the hotel and driven to the Etoile, moored in the heart of Paris. After a champagne reception, you cruise through the center of Paris, past Notre Dame, to moor for the night near the Latin Quarter.

### **Monday**

Morning cruise out of Paris onto the river Marne. After lunch, you visit the magnificent Chateau of Vaux-le-Vicomte. Rejoin the Etoile in Meaux in time to stroll around town and visit the cathedral.

### **Tuesday**

Morning cruise from Meaux to La Ferte. An afternoon visit to Coulomniers, one of the centers of Brie cheese. You visit a master cheese maker for a tasting of the various bries, along with wines from his excellent cellar.

### **Wednesday**

You are now in Champagne, cruising up to Charly-sur-Marne. Visit one of the small family vineyards to taste their wonderful champagne. Afternoon cruise to Chateau Thierry, the scene of American battles in World War I. Optional visit to Belleau Wood battlefield.

### **Thursday**

The Marne takes you through vine-covered hills dotted with small wine villages to the delightful little town of Damery. Afternoon visit to the vast cellars of Moet et Chandon for a private tasting.

### **Friday**

We leave the river Marne for a small canal leading to Epernay. Visit the Abbey of Hautvilliers where the monk Dom Perignon first made champagne. Afternoon drive to Reims cathedral. Farewell dinner on board.

08/28/08

Phone: 888.550.8580  
Phone: 530.274.0764



Email: [info@bargeconnection.com](mailto:info@bargeconnection.com)  
Website: [www.bargeconnection.com](http://www.bargeconnection.com)

T H E B A R G E

C O N N E C T I O N

SAMPLE ITINERARY

# La Nouvelle Etoile

CHAMPAGNE REGION  
PARIS TO EPERNAY

## Saturday

After breakfast you are driven to your hotel or the airport.

08/28/08

Phone: 888.550.8580  
Phone: 530.274.0764



Email: [info@bargeconnection.com](mailto:info@bargeconnection.com)  
Website: [www.bargeconnection.com](http://www.bargeconnection.com)

T H E B A R G E

C O N N E C T I O N

## 2009 CRUISE SCHEDULE

# La Nouvelle Etoile

March 29-Apr 4	<b>Early Season</b>	Haarlem to Haarlem (Tulip Cruise)
April 5-11	<b>Early Season</b>	Haarlem to Haarlem (Tulip Cruise)
April 12-18		Haarlem to Haarlem (Tulip Cruise)
April 19-25		Haarlem to Haarlem (Tulip Cruise)
April 26-May 2		Haarlem to Haarlem (Tulip Cruise)
May 3-9		Haarlem to Haarlem (Tulip Cruise)
May 10-16		Amsterdam to Bruges
May 17-27		Bruges to Paris (2 Country Cruise)
May 31-June 6		Paris to Auxerre
June 7-13		Auxerre to Paris
June 14-20		Paris to Epernay
June 21-27		Epernay to Paris
June 28-July 4		Paris to Auxerre
July 5-11		Auxerre to Paris
July 12-18		Paris to Auxerre
July 19-25	<b>Value Season</b>	Auxerre to Paris
July 26- Aug 1	<b>Value Season</b>	Paris to Epernay
Aug 2-8	<b>Value Season</b>	Epernay to Paris
Aug 9-15	<b>Value Season</b>	Paris to Epernay
Aug 16-22	<b>Re-Position Cruise (no cruises for this week)</b>	
Aug 23-29		Nancy to Strasbourg
Aug 30-Sep 5		Strasbourg to Nancy
Sept 6-12		Nancy to Strasbourg
Sept 13-19		Strasbourg to Nancy
Sept 20-26		Remich to Koblenz

08/28/08

Phone: 888.550.8580  
Phone: 530.274.0764



Email: [info@bargeconnection.com](mailto:info@bargeconnection.com)  
Website: [www.bargeconnection.com](http://www.bargeconnection.com)

T H E B A R G E

C O N N E C T I O N

## 2009 CRUISE SCHEDULE

# La Nouvelle Etoile

Sept 20-26		Remich to Koblenz
Sept 27-Oct 3		Koblenz to Remich
Oct 4-10		Remich to Koblenz
Oct 11-17		Koblenz to Remich
October 18-24	Value Season	Remich to Koblenz

08/28/08

Phone: 888.550.8580  
Phone: 530.274.0764



Email: [info@bargeconnection.com](mailto:info@bargeconnection.com)  
Website: [www.bargeconnection.com](http://www.bargeconnection.com)

T H E   B A R G E

C O N N E C T I O N

2009 PRICES

# La Nouvelle Etoile

## 6 Night Cruise

### Sunday Departures

#### Per Person:

\$6,150 p/p Early Season

\$6,500 p/p Value Season

\$6,900 p/p Main Season

#### 8 Pass Charter:

\$46,900 Early Season

\$48,900 Value Season

\$52,900 Main Season

### 12 day Bruges to Paris

\$11,500 p/p

\$88,500 8 Pass Charter

#### EARLY SEASON:

March 29 & April 5

#### VALUE SEASON:

July 19, 26, August 2, 9; Oct 18

#### MAIN SEASON:

All Remaining Dates

08/28/08

Phone: 888.550.8580  
Phone: 530.274.0764



Email: [info@bargeconnection.com](mailto:info@bargeconnection.com)  
Website: [www.bargeconnection.com](http://www.bargeconnection.com)

T H E B A R G E

C O N N E C T I O N

## MENU TYPES

# La Nouvelle Etoile

### Breakfast

Continental breakfast with freshly baked pastries and breads, cereals, fruit, yogurt and eggs made to order.

### Morning Tea

Freshly brewed tea and coffee served with homemade lamingtons (sponge cake covered in coconut, dripped in chocolate).

### Lunch

Dou potato soup with cheese, croutons, salads, cold meats, variety of pate, cheeses of the day, fresh breads and pastries.

### Afternoon Tea

### Hors d'oeuvres

Cheese and corn fritters.

### Dinner

*Entree* - Trio of vegetables timbale, consisting of cauliflower, carrot, zucchini, gruyere and cayenne pepper. Served on a sauce of roasted red peppers, tomato and garlic.

*Main Course* - North Atlantic Salmon fillets grilled and topped with a champagne and chive lemon beurre blanc.

Cheese course consisting of the best regional cheeses.

*Desert* - Light chocolate souffle glazed with icing and Cream Chantilly.

Coffee, aperitifs and chocolates served in the main salon.

08/28/08

Phone: 888.550.8580  
Phone: 530.274.0764



Email: [info@bargeconnection.com](mailto:info@bargeconnection.com)  
Website: [www.bargeconnection.com](http://www.bargeconnection.com)

T H E   B A R G E

C O N N E C T I O N

## MENU TYPES

# La Nouvelle Etoile

### **Sample 2**

#### **Breakfast**

Continental breakfast with freshly baked pastries and breads, cereals, fruit, yogurt and eggs made to order.

#### Morning Tea

Freshly brewed tea and coffee served with banana bread.

#### **Lunch**

French toast with Virginia leg ham, gouda cheese and tomatoes. Served with assorted pate, cold meats, salads and freshly baked breads.

#### Afternoon Tea

#### Hors d'oeuvres

Smoked trout pate on pumpernickel.

#### **Dinner**

*Entree* - Sautéed Scottish King Scallops served on a bed of zucchini and cabbage braise, topped with lime and chervil sauce with trio of caviar.

*Main Course* - Pork Macadamia - Oriental marinated pork fillets, flame grilled with roasted macadamia nuts served on a bed of angel hair pasta with seasonal vegetables in a curry and sesame sauce.

Cheese course consisting of the best regional cheeses.

*Desert* - Bombe Alaska - a wild berry mousse encased in a vanilla sponge cake topped with meringue and then baked.

08/28/08

Phone: 888.550.8580  
Phone: 530.274.0764



Email: [info@bargeconnection.com](mailto:info@bargeconnection.com)  
Website: [www.bargeconnection.com](http://www.bargeconnection.com)

T H E   B A R G E

C O N N E C T I O N