

Anacoluthe

CRUISING THE RIVERS SEINE & OISE IN ILE DE FRANCE REGION

The Barge Connection
2036 Nevada City Highway #311
Grass Valley, CA 95945
Phone 888.550.8580
Phone 530.274.0764
Fax 530.748.0101
www.bargeconnection.com
Email info@bargeconnection.com

07/14/08



T H E B A R G E

C O N N E C T I O N

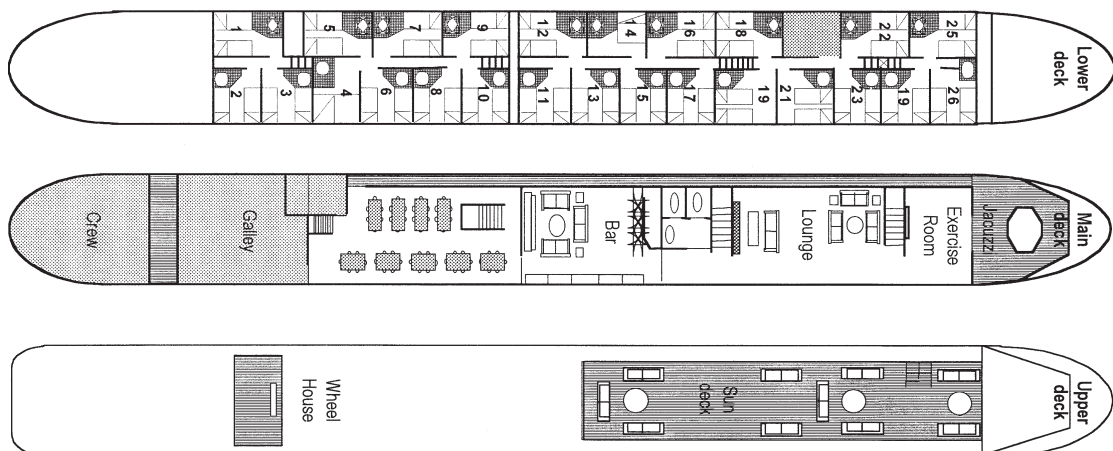
TECHNICAL SPECIFICATIONS

Anacoluthe

SPECIFICATIONS

Size:	210' X 17'
Capacity:	50
Crew:	14
Cabins:	23
Accommodations:	23 Twins, 2 Doubles
Heat & Air:	Central Heat and Air
Cruising Region:	Ile de France
Length of Cruise:	6 Nights
Departure Day:	Saturday
Meals:	All Included
Beverages:	Wine with lunch and dinner (open bar not included)
Entrance Fees:	All Included
Hairdryers:	Supplied
Laundry Facilities:	Not available
Transportation:	Transfers to and from Paris, Private Motorcoach for excursions
Transfer Location:	Gare de Lyon Rail Station
Transfer Time:	15.00 (3.00pm)
After Cruise:	Return to the Gare de Lyone
Transfer Time:	11:30 AM
Recreational Items:	Library, Sound System, Piano Bar, Fitness Room & Jacuzzi
Cruising Season:	April to November

BOAT DIAGRAM



07/14/08

Phone: 888.550.8580
Phone: 530.274.0764



Email: info@bargeconnection.com
Website: www.bargeconnection.com

T H E B A R G E

C O N N E C T I O N

SAMPLE ITINERARY

Anacoluthé

ST MAMMES TO COMPIEGNE
RIVER SEINE AND RIVER OISE

SATURDAY - PARIS/ST.MAMMES

We meet at the Gare de Lyon Rail Station in Paris at 15.00 (3pm) and transfer to Anacoluthé moored in the small town of St Mammes at the junction of the rivers Seine and Loing. After a champagne welcome aboard, you will have time to settle into your cabin and perhaps take a stroll before dinner is served at 7.30pm

SUNDAY - ST.MAMMES/MELUN

After breakfast on board, a short drive to Moret sur Loing, a small medieval town, once home to Alfred Sisley, the impressionist painter, you may recognise some them in the unchanged landscape. We return to Anacoluthé and begin cruising as we enjoy lunch on board and cruise to Melun.

MONDAY - MELUN/PARIS

This Morning, a short drive to Vaux le Vicomte, constructed by Fouquet, the finance minister of the Sun King and the model for Versailles. There is an exceptionally well furnished interior and the gardens were designed by Le Notre. As we begin lunch on board, we cast off and cruise to Paris where we will moor in the heart of the city for the night. After dinner on board, an unforgettable Paris by Night cruise.

TUESDAY - PARIS/RUEIL MALMAISON

We cruise this morning to the town of Rueil Malmaison, arriving around lunchtime. In the afternoon, an excursion to the Château of Malmaison, home to Josephine, the first wife of Napoleon 1st where we can see plenty of memorabilia relating to the daily life of this imperial couple, their artistic tastes, library, the court dresses of Josephine and the billiard game that Napoleon used to relax with. Afterwards, a stroll through the delightful town of Rueil where you will find good shopping. Anacoluthé is moored in the center of the town.

WEDNESDAY - RUEIL MALMAISON/PONT ST MAXENCE

This morning a visit to Giverny, the home and gardens of Claude Monet, the most famous of all the Impressionist painters. Discover the inspiration for his masterpiece « The Water Lillies », see the Japanese Bridge. The French government spends in excess of \$2 million each year to keep the gardens exactly as they were before Monet dies in 1926. The simplicity of his house is surprising. Afterwards we cruise to the delightful riverside town of St Maxence where we find the 14c royal abbey of Moncel.

THURSDAY - PONT ST MAXENCE/COMPIEGNE

After breakfast, a visit to the Château of Chantilly, situated in the heart of 7,800 hectares of land surrounded by a large forest. The château dates from the middle ages and has an art gallery of 1,000 paintings, 2,500 designs and 2,500 engravings, second only to the Louvre

07/14/08

Phone: 888.550.8580
Phone: 530.274.0764



Email: info@bargeconnection.com
Website: www.bargeconnection.com

T H E B A R G E

C O N N E C T I O N

SAMPLE ITINERARY

Anacoluthé

ST MAMMES TO COMPIEGNE
RIVER SEINE AND RIVER OISE

museum. It is also very famous for racehorse breeding and has one of the worlds finest stables. The French gardens were designed by Le Notre, there is also Le Petit Parc, the Anglo-Chinese garden and the English garden, making this the most beautiful of settings. We return to Anacoluthé for lunch and a cruise to Compiègne. Here we can have a guided walking tour of the historic town, the Hotel de Ville dates from the 16 c, the cloisters of the abbey St Corneille from 877 AD. The château here is a magnificent example of French classical architecture with richly decorated apartments from the 18 c. This was one of the three royal residences in France along with Versailles and Fontainebleau. We return to Anacoluthé and tonight our gala farewell dinner will be served at 8pm.

FRIDAY - COMPIEGNE/PARIS

This morning, after breakfast, we return to the Gare de Lyon Rail Station in Paris at approximately 11:30 AM.

07/14/08

Phone: 888.550.8580
Phone: 530.274.0764



Email: info@bargeconnection.com
Website: www.bargeconnection.com

T H E B A R G E

C O N N E C T I O N

SAMPLE ITINERARY

Anacoluthé

ROUEN TO ST MAMMES

Saturday - ROUEN

We meet at the Gare de Lyon at 15.00 (3pm) and transfer to Anacoluthé moored in Rouen, Capital City of Normandy. The boat is moored on the Seine river, close to the city center.

Sunday - ROUEN-POSES

Morning guided walking tour of **Rouen**, visit the medieval center including the cathedral and ancient quarter with fine examples of half timbered buildings, typical of the Normandy architecture. There is time for shopping before you rejoin the boat. All afternoon upstream cruise to the first lock on the river from the sea at Poses, our mooring for tonight.

Monday - POSES-VERNON

Morning cruise to Les Andelys nicely situated in a meander of the Seine river, and next to the famous ruins of Château Gaillard. After a Brunch on board we will leave by coach for an excursion to the charming city of **Honfleur**. Walking tour of the harbour, and picturesque streets. Return to the boat passing over both the Normandy and Tancarville bridges. Welcome back on board with a tasting of cider, and cruise to Vernon.

Tuesday - VERNON-CHATOU

An early start for the short ride to **Giverny**, home to Claude Monet for over 40 years. We visit the house and gardens which inspired such masterpieces as "The Water Lillies" and see the Japanese Bridge that he painted. This afternoon, we cruise to Chatou a delightful riverside town.

Wednesday - CHATOU-PARIS

There is a very short distance to visit la **Malmaison**, home of Josephine de Beauharnais, the first wife of Napoleon 1st where we can see lots of memorabilia from this Imperial couple's daily life. We then stroll through the center of **Rueil**, an ideal place for shopping with some exclusive boutiques. Cruise to Paris, for a **memorable cruise of Paris illuminated**. Overnight in Paris.

07/14/08

Phone: 888.550.8580
Phone: 530.274.0764

Email: info@bargconnection.com
Website: www.bargconnection.com

T H E B A R G E

C O N N E C T I O N

SAMPLE ITINERARY

Anacoluthe

ROUEN TO ST MAMMES

Thursday - PARIS-ST MAMMES

Morning cruise towards *Melun* and visit to the **Chateau Vaux le Vicomte**, built by Fouquet, the finance minister of the Sun King and the model for Versailles. There is an exceptionally well furnished interior and magnificent gardens. Afternoon cruise to *St Mammes*, a very short distance from **Moret sur Loing**, a medieval small town and once home to Alfred Sisley who lived and painted many scenes here. This evening will be our farewell gala dinner.

Friday - ST MAMMES-PARIS

This morning after breakfast, return to the Gare de Lyon in Paris, arriving before noon.

Note that this is a sample itinerary: it is subject to modification in the case of unforeseen circumstances and canal closures. Please check our web site for latest update on our detailed itinerary. We cruise in opposite direction on alternate weeks.

07/14/08

Phone: 888.550.8580
Phone: 530.274.0764

Email: info@bargeconnection.com
Website: www.bargeconnection.com

T H E B A R G E

C O N N E C T I O N

2009 PRICES

Anacoluthe

Low Season: \$2805 US
1700 Euros

High Season: \$3,135 US
1900 Euros

LOW SEASON DEPARTURE DATES

March 21 to April 25, July 11 to August 15, October 24 to November 7

HIGH SEASON DEPARTURE DATES

May 2 to July 4, August 22 to October 17

**The US rate may change due to exchange fluctuations.
Please contact us for a current US rate.**

07/14/08

Phone: 888.550.8580
Phone: 530.274.0764



Email: info@bargeconnection.com
Website: www.bargeconnection.com

T H E B A R G E

C O N N E C T I O N

2009 CRUISE SCHEDULE

Anacoluthe

March 21	St Mammes to Compiegne
Mar 28	Compiegne to St Mammes
Apr 4	St Mammes to Compiegne
Apr 11	Compiegne to St Mammes
Apr 18	St Mammes to Compiegne
Apr 25	Compiegne to St Mammes
May 2	St Mammes to Compiegne
May 9	Compiegne to St Mammes
May 16	St Mammes to Compiegne
May 23	Compiegne to St Mammes
May 30	St Mammes to Rouen
Jun 6	Rouen to St Mammes
Jun 13	St Mammes to Rouen
Jun 20	Rouen to St Mammes
Jun 27	St Mammes to Rouen
Jul 4	Rouen to St Mammes
Jul 11	St Mammes to Rouen
Jul 18	Rouen to St Mammes
Jul 25	St Mammes to Rouen
Aug 1	Rouen to St Mammes
Aug 8	St Mammes to Rouen
Aug 15	Rouen to St Mammes
Aug 22	St Mammes to Rouen
Aug 29	Rouen to St Mammes
Sep 5	St Mammes to Rouen

07/14/08

Phone: 888.550.8580
Phone: 530.274.0764



Email: info@bargeconnection.com
Website: www.bargeconnection.com

T H E B A R G E

C O N N E C T I O N

2009 CRUISE SCHEDULE

Anacoluthé

Sep 12	Rouen to St Mammes
Sep 19	St Mammes to Rouen
Sep 26	Rouen to St Mammes
Oct 3	St Mammes to Compiègne
Oct 10	Compiègne to St Mammes
Oct 17	St Mammes to Compiègne
Oct 24	Compiègne to St Mammes
Oct 31	St Mammes to Compiègne
Nov 7	Compiègne to St Mammes

07/14/08

Phone: 888.550.8580
Phone: 530.274.0764



Email: info@bargeconnection.com
Website: www.bargeconnection.com

T H E B A R G E

C O N N E C T I O N

MENU TYPES

Anacoluthé

SAMPLE LUNCH MENU

Tarte à l'Oignon et Fromage
Salade de Pommes de Terre 'Bistrot'
Salade de Tomates et Feta

Salade d'Épinards ou Mâche

Mousse au Chocolat

SAMPLE DINNER MENU

Cassiolette d'Escargot Bressane à la Crème d'Ail

Volaille au Cidre

Salad and Two Cheeses

Fraises Ecrasées au Croustillant de Riz au Lait

Coffee

07/14/08

Phone: 888.550.8580
Phone: 530.274.0764



Email: info@bargeconnection.com
Website: www.bargeconnection.com

T H E B A R G E

C O N N E C T I O N

MENU TYPES

Anacoluthé

Sample Wines (possibilities of change)

WHITE

Meursault AOC 1999

Domaine Gauffroy, Sancerre AOC 2002

Domaine Grall, Bourgogne Htes Côtes de Beaune AOC 1993

Dom .de Moissenet, Mâcon Villages AOC 1999

Domaine des Ruères, Alsace Riesling AOC 2000

Domaine Dopff au Moulin, Chardonnay VDP 2000

Domaine Antonin Rodet, Bourgogne Aligoté AOC 1999

Domaine Amiot, Côtes du Rhône AOC 1998

Château de la Lyre, Sauvignon VDP 2001

Domaine Clavelier et Fils, Muscadet de Sèvre et Maine AOC 2001

Domaine Sauvion, Entre Deux Mers AOC, 2001

Château Haut Pougnan

REDS

Gevrey Chambertin AOC 1999

Domaine Gibourg, Saint Emilion AOC 1998

Château Bois Dumas, Médoc AOC 1996

Château Grand Courbian, Pinot Noir AOC 2000

Domaine Antonin Rodet, Saint Romain AOC 2000

Domaine Gibourg, Côtes de Bourg AOC 1998 –

Château Robert, Passetoutgrains VDP 2001

Domaine Andrée Boillot, Anjou AOC 2001

Domaine des Quarres, Bergerac AOC 1998

Domaine de Barbeyrolles, Côtes du Rhône AOC 2000

Domaine R. Greou, Merlot VDP 2000

Domaine R. de Moissenet

Rosé de Provence 2001

Domaine Lou Pescariou, Crémant de Bourgogne

Cave des Vignerons de Buxy

Champagne Mathieu Princet

07/14/08

Phone: 888.550.8580
Phone: 530.274.0764



mail: info@bargconnection.com
website: www.bargconnection.com

T H E B A R G E

C O N N E C T I O N